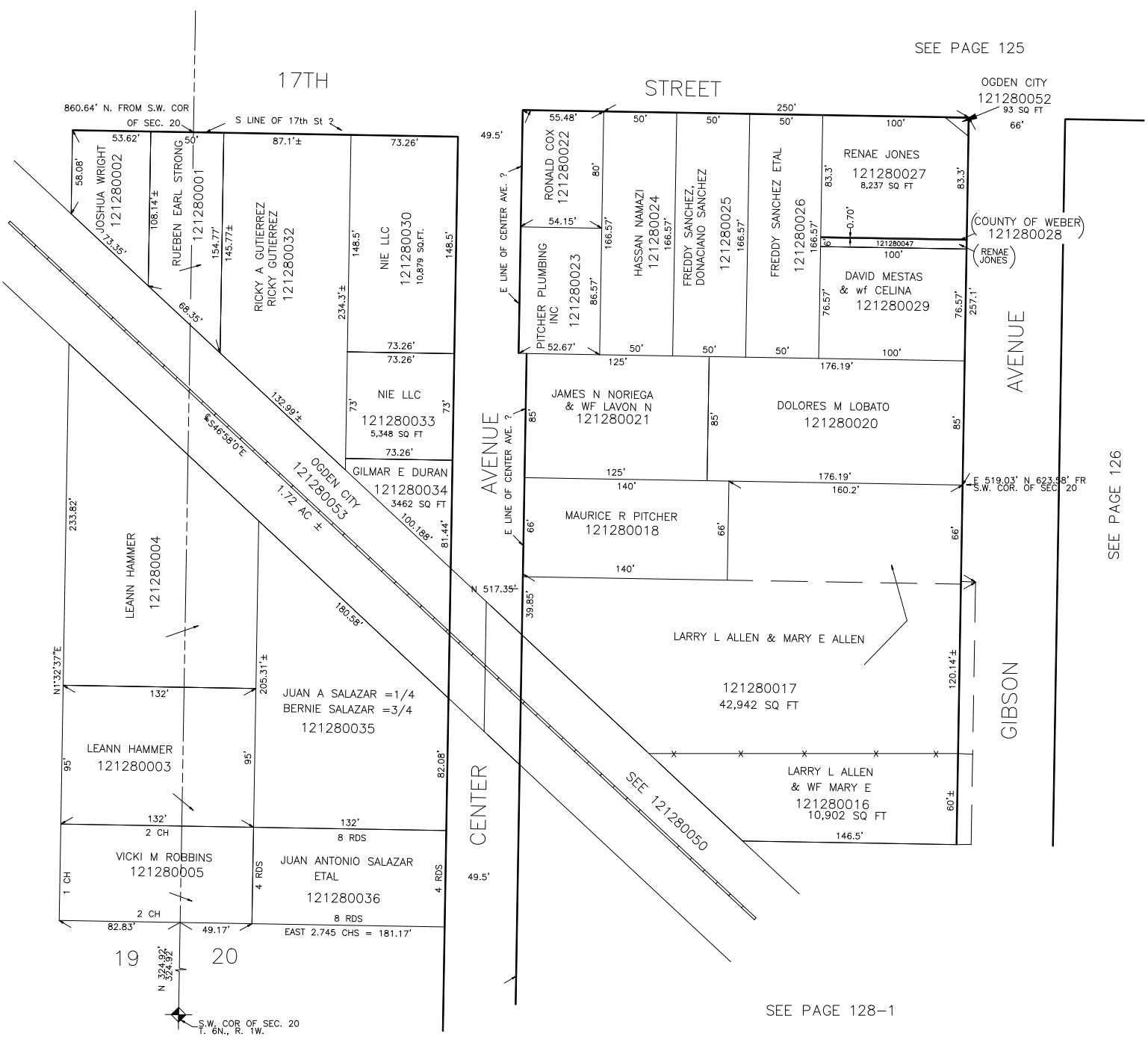


PART OF SECTIONS 19 & 20, T.6N., R.1W., S.L.B. & M.

IN OGDEN CITY
SCALE 1" = 50'

TAXING UNIT: 25

SEE PAGE 125



OGDEN CITY
121280052
93 SQ FT
66'

AVENUE

GIBSON

SEE PAGE 126

SEE PAGE 128-1